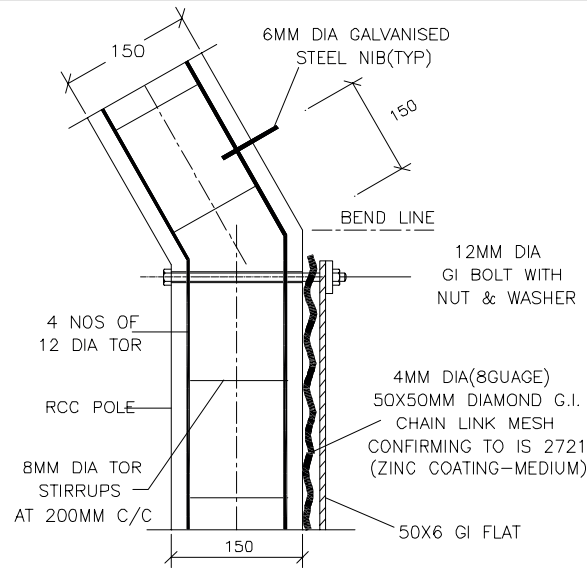
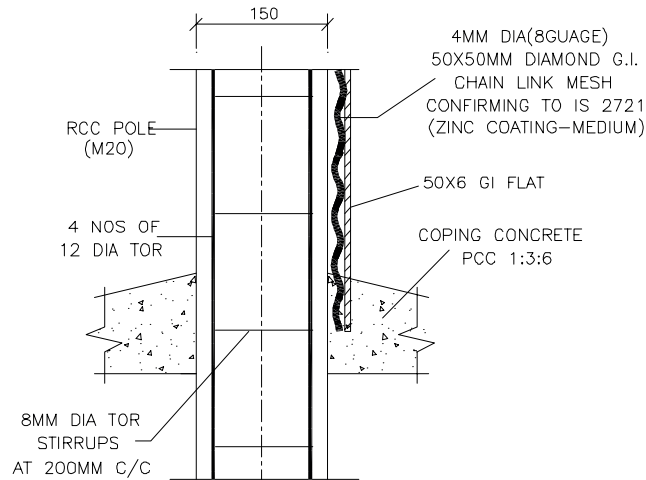


DETAIL OF
FENCING POLE
(M20)



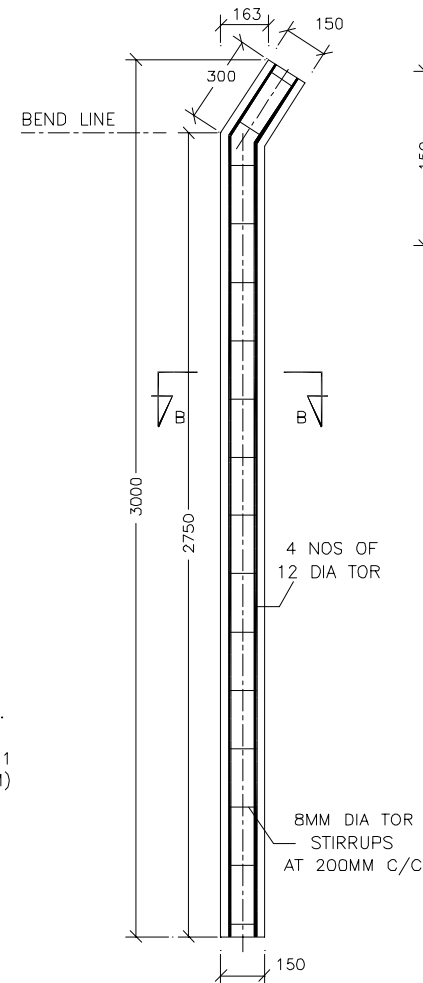
DETAILS AT 'A'



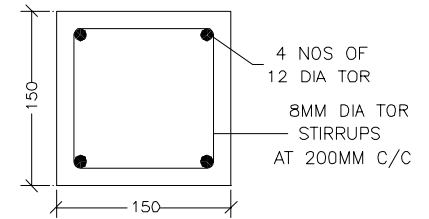
DETAIL AT 'B'

NOTES:

1. ALL DIMENSIONS ARE IN MMS ONLY, UNLESS OTHERWISE SPECIFIED.
2. DONOT SCALEOUT THIS DRG, FOLLOW ONLY THE WRITTEN DIMENSIONS.
3. C/C DISTANCE BETWEEN ADJACENT POST IN END PANEL MAY BE SUITABLY ADJUSTED IN EACH STRAIGHT LENGTH.
4. INCLINED STAY POST SHALL BE PROVIDED AT EVERY CORNER/ TENTH POST/CHANGE IN LEVELS/DIRECTIONS
5. ALL STRUCTURAL STEEL FLAT & ANGLE SHALL BE PAINTED WITH SYNTHETIC ENAMEL PAINT 2 COATS OVER ONE COAT OF PRIMER.
6. GRADE OF CONCRETE SHALL BE M20 FOR POLES.
7. THE EXPOSED FACES OF THE STONE MASONRY SHALL BE POINTED IN CM 1:3
8. GRADE OF STEEL SHALL BE FE 415.



DETAIL OF
STRUT POLE
(M20)



DETAIL AT AA & BB

KARNATAKA POWER TRANSMISSION CORPN LTD

SECURITY FENCING DETAILS FOR
220 - 110 & 66KV SUB STATIONS

SHEET 2 OF 2

DRG NO: CEE (P & C) / SE(C) / 06-07/220-110 & 66KV/005
REVISION 1 NOT TO SCALE

HDM	AEE(C)		SE(C)	CHIEF ENGR ELE (P&C) PLANNING AND COORDINATION
	DRN	DGN	REC	
APPROVED				